

ECOKRAFT CUTTER MILL SMC

EFFICIENT, PRODUCTIVE AND RELIABLE



AREAS OF APPLICATION

The ECOKRAFT SMC cutter mill series is equipped with sound insulation and is ideal for a wide range of materials. Not only the favorable purchase price, but also the robust, split steel/welded housing, the good cleaning possibility as well as easy knife and screen change distinguish the ECOKRAFT SM machines.

Due to the tangential housing geometry together with the V-cut rotors, even bulky and large-volume parts are accepted and shredded by the rotor.

ADVANTAGES

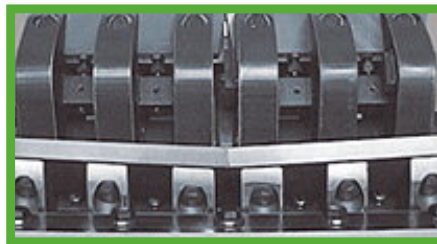
- ✓ Knives can be set and adjusted outside the machine
- ✓ Mobile, compact design
- ✓ Various rotor variations available
- ✓ Very easy access for servicing and maintenance
- ✓ Tangential infeed of material

ECOKRAFT CUTTER MILL SMC

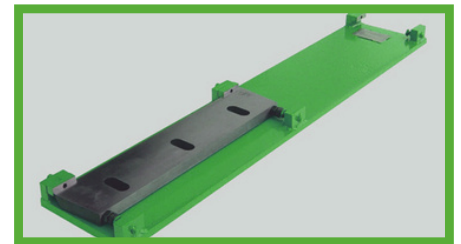
The cutter mills of the SMC series provide a pleasant working environment with their completely sound-insulated housing. Different rotor types with working widths from 300mm to 1,400mm are available. The grinding chamber, manufactured in a steel-welded construction, in combination with the V-shaped rotor knives underline the versatility of this machine. The optimal design ensures ideal accessibility of the machine for maintenance and cleaning work.



The sophisticated, user-friendly design facilitates accessibility for maintenance and cleaning work



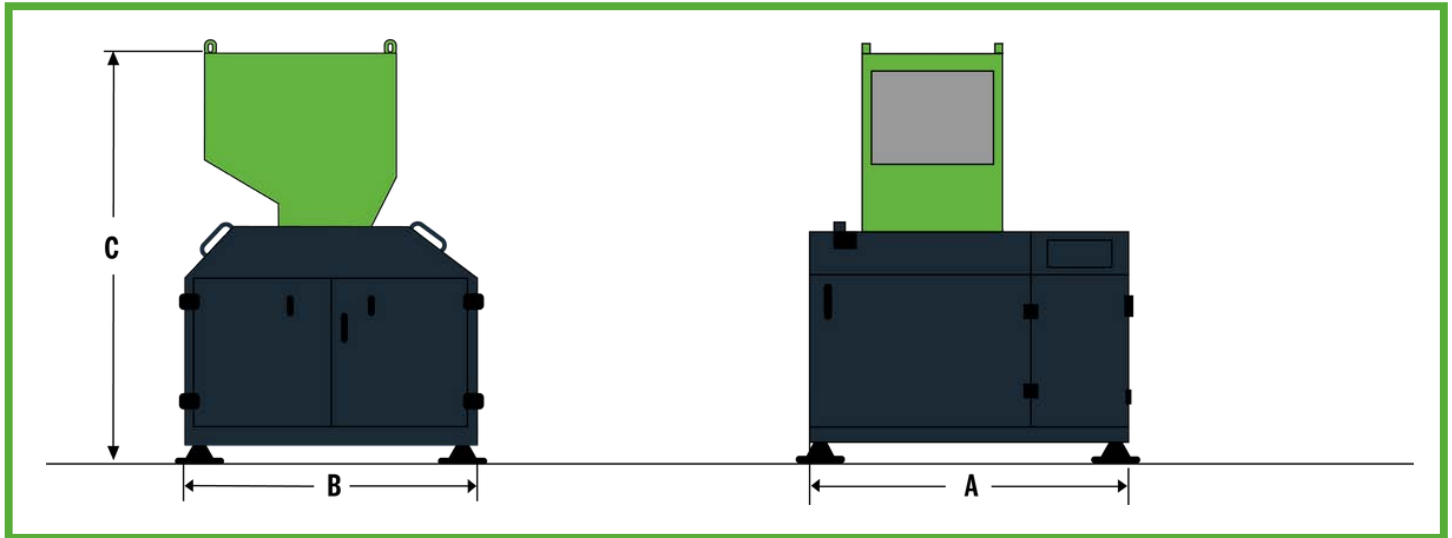
The rotor and its knives can be adjusted for various tasks. The rotor is designed according to contemporary v-cut layout guaranteeing a consistently high grinding quality.



The adjustment of all knives takes place outside the cutter-mill in a setting gauge, which is included in the scope of delivery. This eliminates tedious adjustment work inside the machine.



SPECIFICATIONS



TYPE*	SMC300/300	SMC300/600	SMC500/500	SMC500/700	SMC500/1000
Rotor diameter (mm)	300	300	500	500	500
Rotor width (mm)	300	600	500	700	1,000
Number of knife rows	3	3	5	5	5
Number of knives	3	6	10	10	10
Strator knives	2	2	3	3	3
Insertion opening (mm)	400 x 290	400 x 590	560 x 500	560 x 700	560 x 990
Weight (kg)	1,200	1,400	2,200	2,500	3,000
Power (kWh)	7.5	18.5	30	37	45
Width A (mm)	1,300	1,600	1,550	1,750	2,100
Length B (mm)	1,550	1,550	1,930	1,930	2,160
Height C (mm)	1,990	1,990	2,450	2,450	2,510

*Further types on request

