

ECOKRAFT DOSING SYSTEM DS100

CONTROLLED ADDITION OF ADDITIVES / BINDERS



AREAS OF APPLICATION

The ECOKRAFT dosing system DS100 enables the precise addition of additives/binders to optimize material flow and pellet quality, especially with challenging materials. The amount of binder and the speed of the dosing screw can be controlled either via the display of the pellet press or, when using the stand-alone version, through a manual rotary controller.

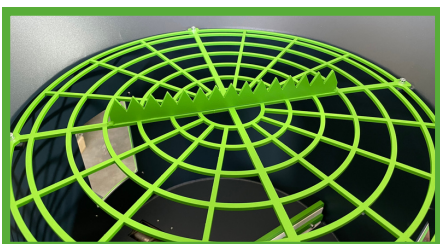
The dosing system consists of a hopper unit with agitator, a protective grid with serrated crown for opening/tearing the starch bag, a dosing screw, a base frame, and an electric motor. Additionally, the DS100 is equipped with sight glasses for visual level monitoring and a level sensor that indicates a low level (below 30%).

ADVANTAGES

- ✓ Improved pellet quality
- ✓ Enhanced material flow
- ✓ Easy filling
- ✓ Individual dosing capability
- ✓ Mobile, compact design

ECOKRAFT DOSING SYSTEM DS100

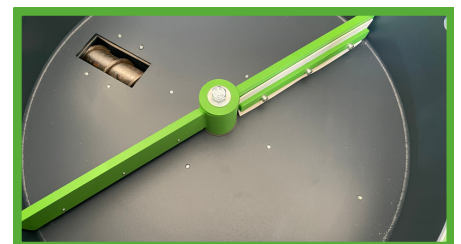
The ECOKRAFT dosing system DS100 is a solution for the addition of binder to the raw material, resulting in a significant improvement in pellet quality. The binder is fed directly to the material from the material bunker to the pellet press discharge. Due to its compact and mobile design, the dosing system can be flexibly placed. When integrated with the pellet press control, a warning message is displayed on the screen or optionally sent via SMS when the fill level is below a certain threshold. In the stand-alone variant, a flashing light illuminates.



To facilitate the filling process, the protective grid with serrated crown allows for tearing open the starch bag and filling the dosing system.



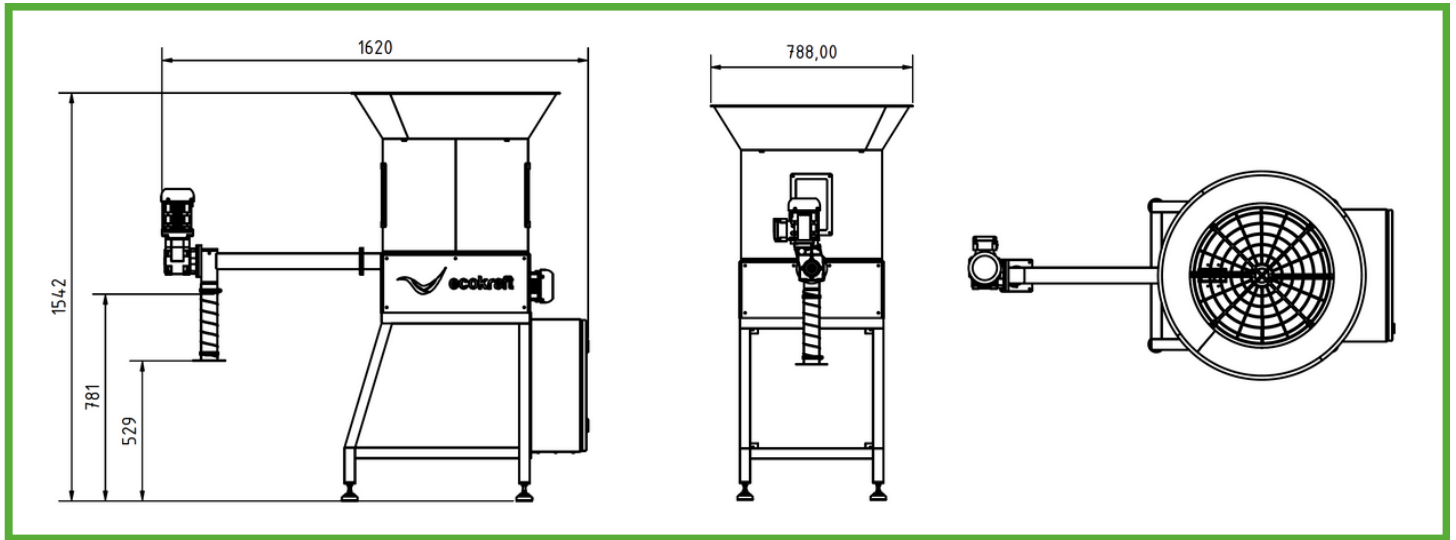
The dosing system is equipped with sight glasses on both sides for visual level monitoring. Additionally, a sensor notifies when the fill level falls below 30%.



An internal agitator ensures to prevent bridging and enables a homogeneous material flow.



SPECIFICATIONS



TYPE

DS100

Power consumption	approx. 1 kW
Rated voltage	400V
Connection	16A CEE plug or integration into pellet press
Container volume	approx. 100 liters (3x starch bags of 20 kg each)

Length	1,620 mm
Width	788 mm
Height	1,542 mm
Weight	approx. 160 kg

